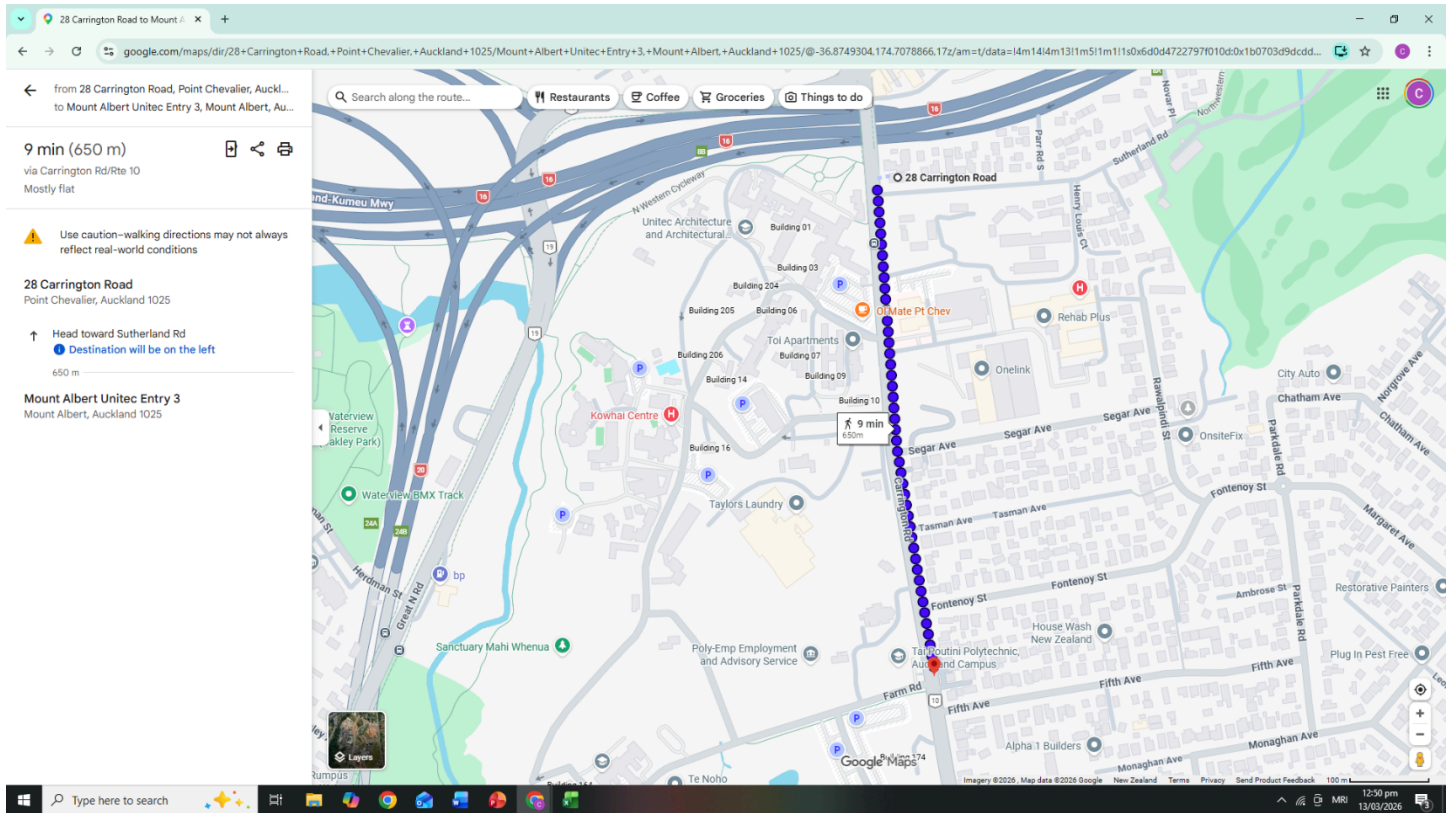


Risk assessment and management plan for walks and rubbish pickups along Carrington Road (max 650m) and Sutherland Road (max 400m)

Risk	Action taken to minimise risk
The surface of the footpath is uneven in places	Tamariki are given clear instructions to walk slowly
The density of traffic is high in the area	Close supervision by kaiako and good adult-child ratios are maintained at all times.
Crossings on the road	Adults ensure that cars on both sides of the road have stopped before crossing
Footpath is used by cyclists, people in wheelchairs, people from rehabilitation and mental health units and the elderly.	Adults make sure tamariki stop away from the edge of the road and give way to pedestrians and cyclists. If there is any concern about the behaviour of people in the area, Kaiako will remain calm and decide on the safest way to deal with the situation.
Tamariki in pushchairs	Tamariki in pushchairs wear restraints at all times
Behaviour of tamariki	Tamariki are placed in such a way that takes into account maturity and age, ratios are adjusted for this too
Adults becoming unable to support due to illness or accident	Trips are relatively short and close to the centre. Kaiako take personal medications and cell phones to contact the person responsible remaining in the centre. A first aid kit is always taken on outings. The trip will be cancelled and everyone return to the centre ASAP
Hazardous items such cigarette butts, broken glass etc on rubbish pick-up walks	Tamariki and kaiako use a grabber and wear gloves for safety. Dangerous items will only be picked up by kaiako if that can be done safely. Rubbish will be put into CK bins. Kaiako and tamariki wash hands on arrival back at the centre.



Best 1 min 5 min 2 min

Add destination

Options

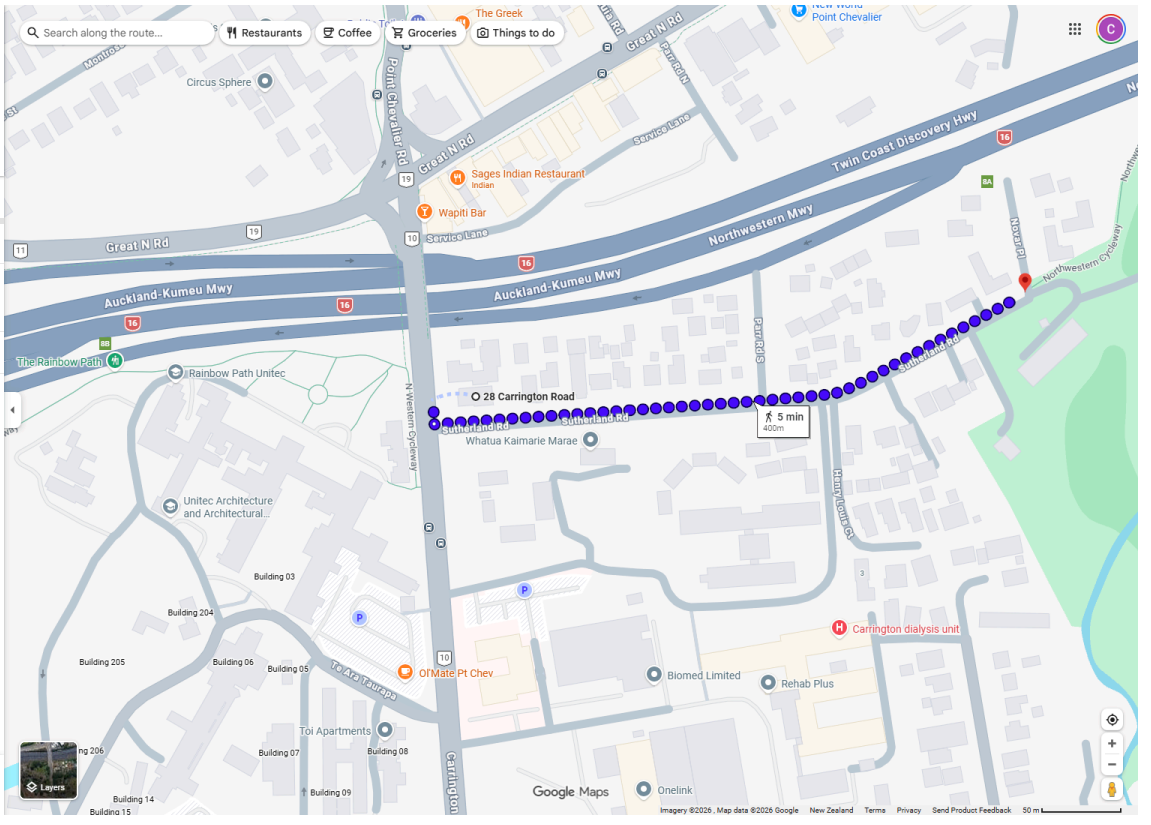
Send directions to iPhone
 Copy link

via Sutherland Rd 5 min
 400 m

[Details](#)
[Preview](#)

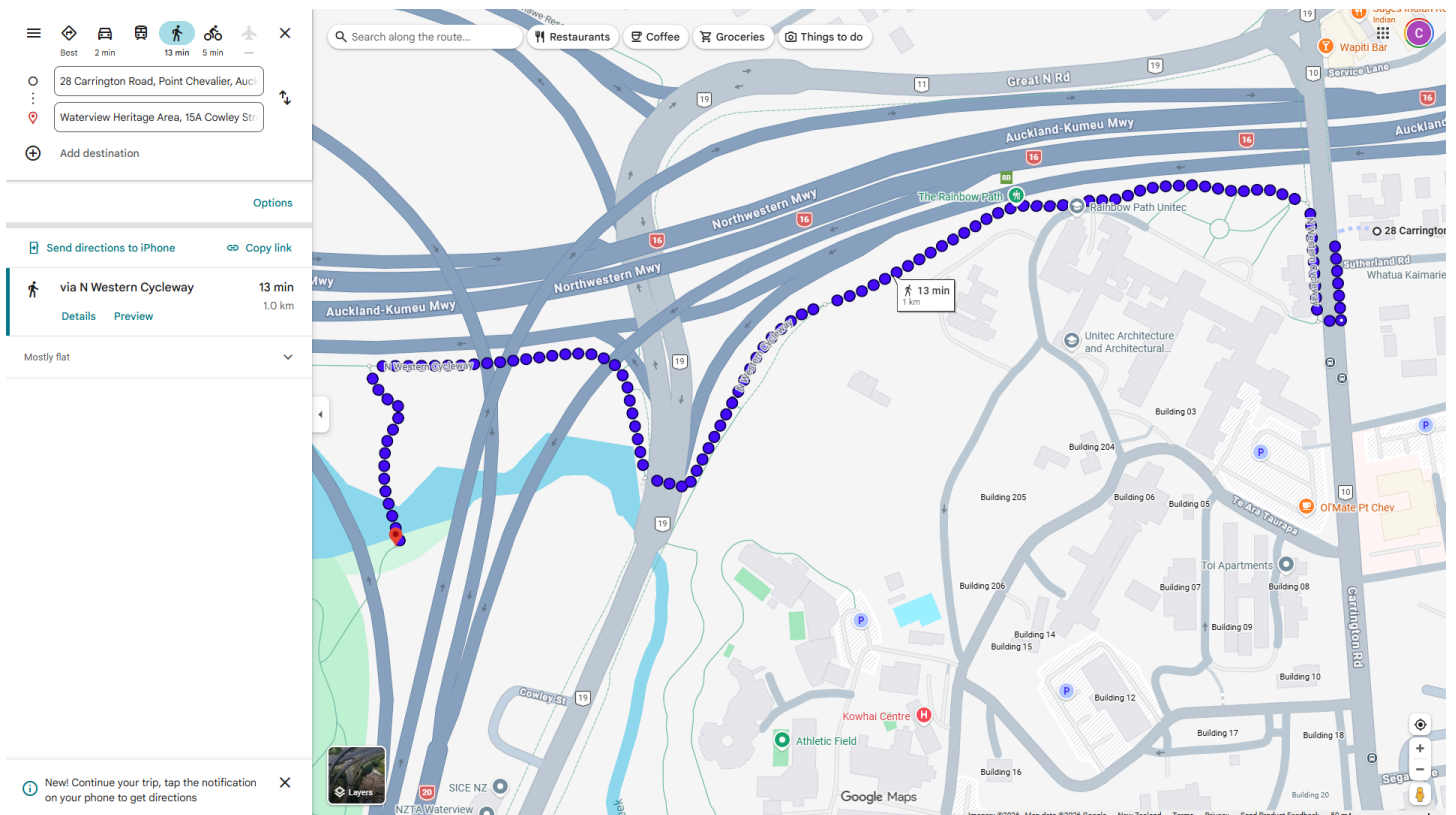
Mostly flat

New! Continue your trip, tap the notification on your phone to get directions



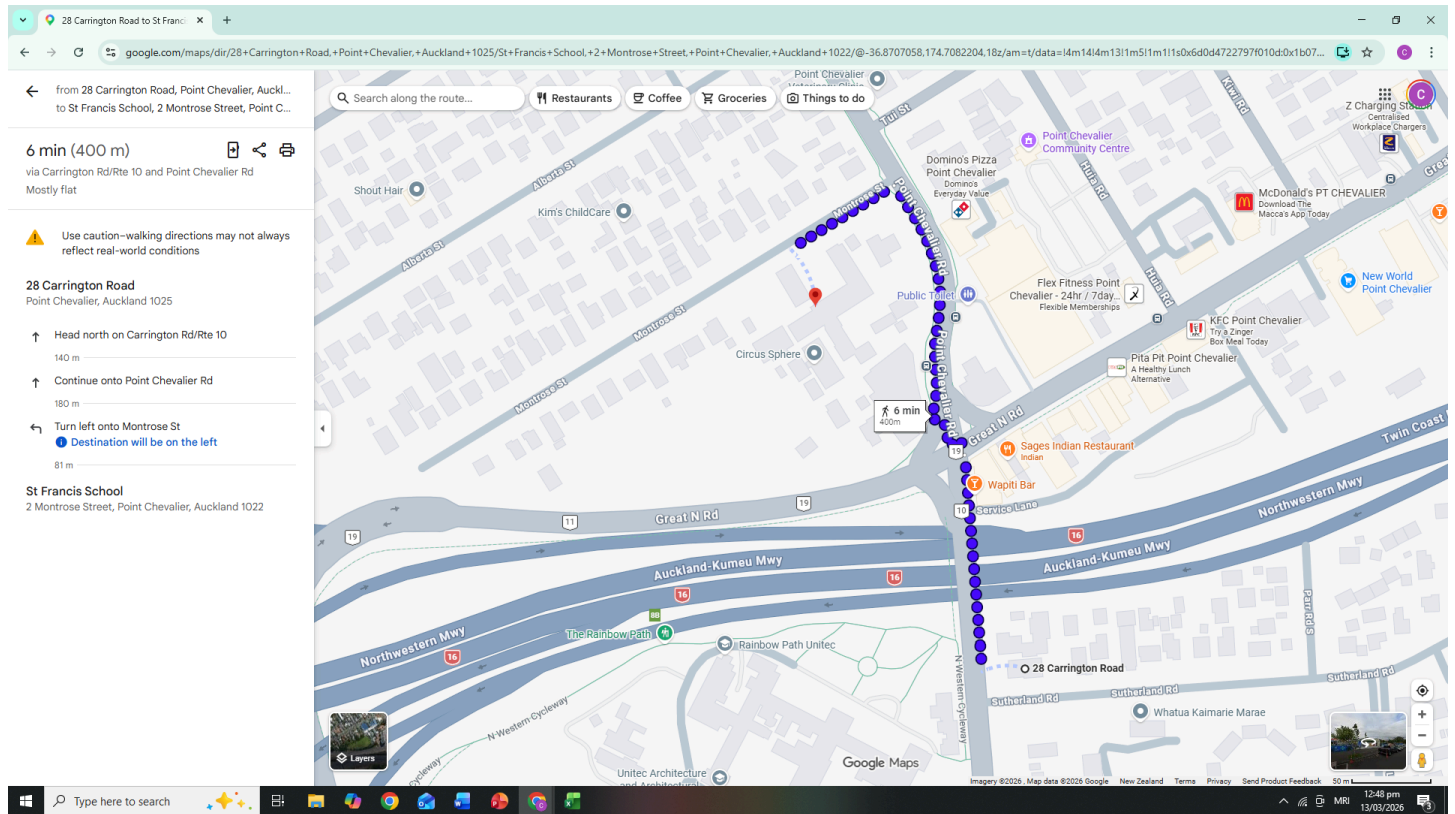
Risk Assessment and management plan for Oakley Creek Planting (1km)

Risk	Action taken to minimise risk
The surface of the footpath is uneven in places	Tamariki are given clear instructions to walk slowly
The density of traffic is high in the area	Close supervision by kaiako and good adult-child ratios are maintained at all times. The group is reminded to stay on the left of the shared cycle path and adults check for cyclists
Crossings on the road	Adults ensure that cars on both sides of the road have stopped before crossing
Footpath is used by cyclists, people in wheelchairs, people from rehabilitation units and the elderly	Adults make sure tamariki stop away from the edge of the road and give way to pedestrians and cyclists
Water level of the creek	The walk continues only if the creek is well below the banks
Tamariki's behaviour	Tamariki are placed in such a way that takes into account maturity and age, ratios are adjusted for this too
Adults becoming sick	Trips are relatively short and close to the centre. Kaiako take personal medications and cell phones to contact the person responsible remaining in the centre. A first aid kit is always taken on outings. The trip will be cancelled and everyone return to the centre ASAP



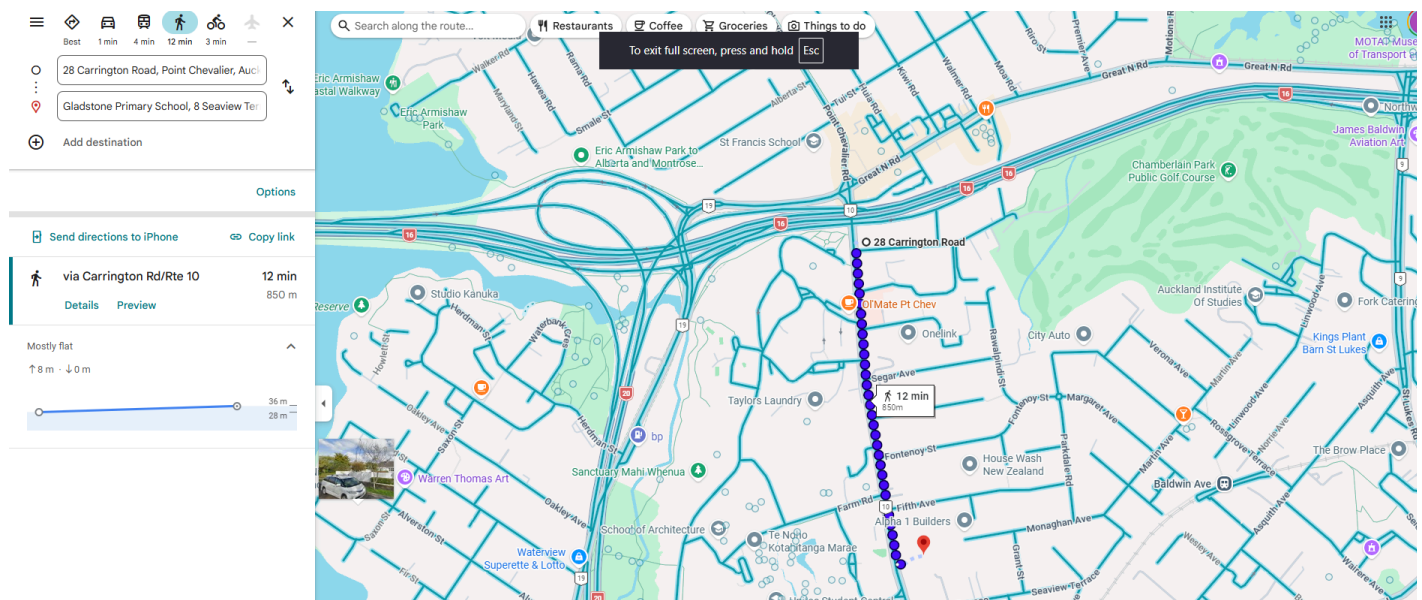
Risk Assessment and management plan for walks to St Francis Primary School, Point Chevalier (400m)

Risk	Action taken to minimise risk
The surface of the footpath is uneven in places	Tamariki are given clear instructions to walk slowly
The density of traffic is high in the area	Close supervision by kaiako and good adult-child ratios are maintained at all times. The group is reminded to stay on the left of the shared cycle path and adults check for cyclists
Crossings on the road	Adults ensure that cars on both sides of the road have stopped before crossing
Footpath is used by cyclists, people in wheelchairs, people from rehabilitation units and the elderly	Adults make sure tamariki stop away from the edge of the road and give way to pedestrians and cyclists
Tamariki's behaviour	Tamariki are placed in such a way that takes into account maturity and age, ratios are adjusted for this too
Adults becoming sick	Trips are relatively short and close to the centre. Kaiako take personal medications and cell phones to contact the person responsible remaining in the centre. A first aid kit is always taken on outings. The trip will be cancelled and everyone return to the centre ASAP



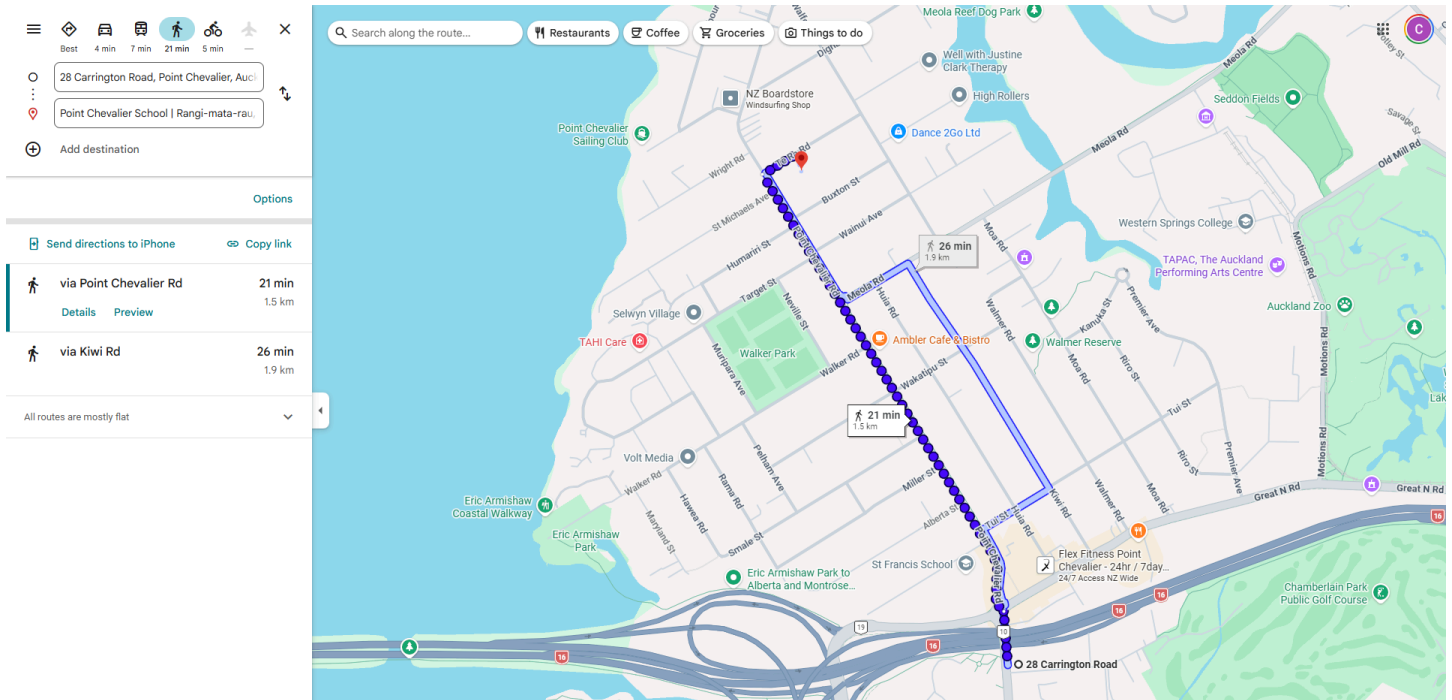
Risk Assessment and management plan for walks to Gladstone Primary School (850m)

Risk	Action taken to minimise risk
The surface of the footpath is uneven in places	Tamariki are given clear instructions to walk slowly
The density of traffic is high in the area	Close supervision by kaiako and good adult-child ratios are maintained at all times. The group is reminded to stay on the left of the shared cycle path and adults check for cyclists
Crossings on the road	Adults ensure that cars on both sides of the road have stopped before crossing
Footpath is used by cyclists, people in wheelchairs, people from rehabilitation units and the elderly	Adults make sure tamariki stop away from the edge of the road and give way to pedestrians and cyclists
Tamariki's behaviour	Tamariki are placed in such a way that takes into account maturity and age, ratios are adjusted for this too
Adults becoming sick	Trips are relatively short and close to the centre. Kaiako take personal medications and cell phones to contact the person responsible remaining in the centre. A first aid kit is always taken on outings. The trip will be cancelled and everyone return to the centre ASAP



Risk Assessment and management plan for walks to Point Chevalier School (1.5km)

Risk	Action taken to minimise risk
The surface of the footpath is uneven in places	Tamariki are given clear instructions to walk slowly
The density of traffic is high in the area	Close supervision by kaiako and good adult-child ratios are maintained at all times. The group is reminded to stay on the left of the shared cycle path and adults check for cyclists
Crossings on the road	Adults ensure that cars on both sides of the road have stopped before crossing
Footpath is used by cyclists, people in wheelchairs, people from rehabilitation units and the elderly	Adults make sure tamariki stop away from the edge of the road and give way to pedestrians and cyclists
Tamariki's behaviour	Tamariki are placed in such a way that takes into account maturity and age, ratios are adjusted for this too
Adults becoming sick	Trips are relatively short and close to the centre. Kaiako take personal medications and cell phones to contact the person responsible remaining in the centre. A first aid kit is always taken on outings. The trip will be cancelled and everyone return to the centre ASAP



Risk Assessment and Management plan for Tree Climbing at Whatua Kaimarie

Risk	Action taken to minimise - risk kaiako must visit the office first to check that it is appropriate to play.
The surface of the footpath is uneven in places	Children are given clear instructions to walk slowly
The density of traffic is high in the area	Adults make sure children stop away from the edge of the road and give way to pedestrians and bike riders.
Crossings on the road	Adults ensure that cars on both sides of the road have stopped before crossing. Cross the road opposite the health unit office.
Children exploring a large unfamiliar area	The climbing area is clearly defined by kaiako and a maximum of one tree per supervising adult. Play on the grass area is also defined.
Gaps in the fencing alongside Carrington Road	Children moved to an area where there are no gaps
Children's behaviour	Children are placed in such a way that takes into account maturity and age, ratios are adjusted for this too
Children falling down from the trees	Children are encouraged to climb to a height they feel safe and comfortable as long as it is to a height that an adult can reach
Adults unable to support due to illness or accident	Trips are relatively short and close to the centre. Kaiako takes personal medications and cell phones to contact the person in the centre. A first aid kit is always taken on outings. The trip will be cancelled and everyone return to the centre ASAP
Hazardous items on the site	Kaiako check the grounds for hazardous items and dispose of them safely or move children to a safe area. Hands washed on arrival back at the centre.

I have read the centre's policy on outings and agree that my child may take part in outings as long as the conditions outlined in risk management plans are met.

I give/do not give consent for my child to take part in regular excursions (rubbish pickups along Sutherland Road, Marches on Carrington Road, school visits to Gladstone Primary, Pt Chevalier Primary and St Francis school) in the local community that do not require transportation and mode of transport will be walking

I give/do not give consent for my child to take part in outings to Oakley Creek

I give/do not give consent for my child to take part in outings that involve tree climbing

I give/do not give consent for my child to take part in outings with a ratio of 1:3 for 2 year olds and younger, 1:4 for 3 year olds and older

Name of parent _____

Name of child _____

Date _____ Signature _____